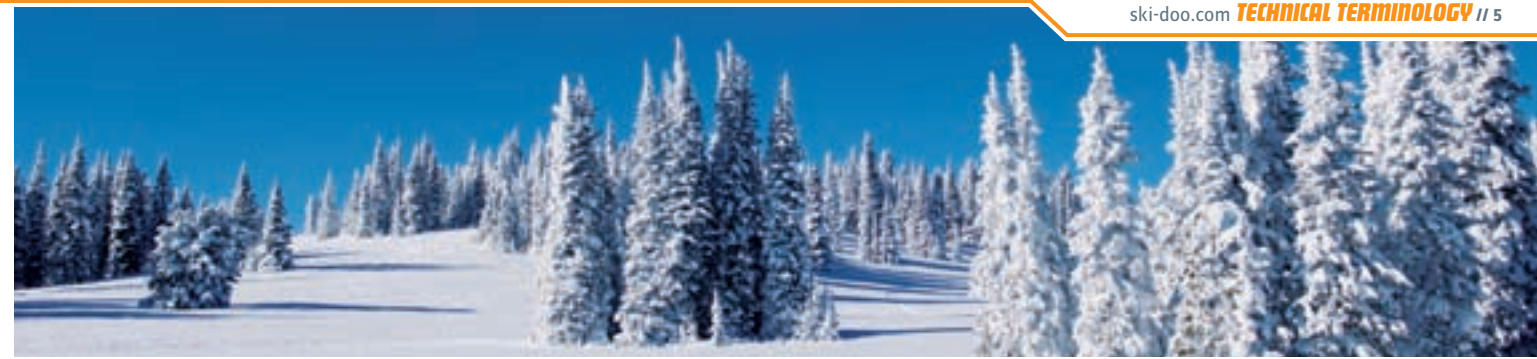


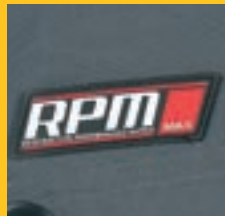
BRP has been developing products designed to maximize your winter enjoyment for over 50 years. A snowmobile industry leader, we invented the first Ski-Doo suit, and our tradition of research excellence and technological innovation moves forward unabated. Our inspiration continues to be satisfying our customers completely, comfortably and safely. Who else wears their commitment to riders on their sleeve like BRP?



WE KEEP YOU DRY



Respirative Performance Matrix or RPM coating exclusive to BRP Riding Gear. Delivers extremely high performance and durability for perfect climate control under even the most extreme conditions. Trademark waterproofness, windproofness and breathability required of BRP Riding Gear shell fabric developed for intensive snowmobile use and demanding riders.

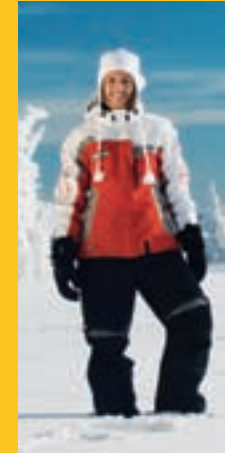


Same great RPM coating PLUS total seam and logo sealing. Also, added direct venting in strategic jacket areas for more efficient moisture management during intense activity.



SEAM SEALING

Seams and embroidery can act as tiny entry points through which wind and water can infiltrate. That's why Ski-Doo jackets and pants with RPM are critical seam sealed. And Riding Gear with RPM Max are 100% seam and logo sealed for an even more comprehensive barrier from all the elements. The proprietary tape is also waterproof and breathable to fully seal the deal for complete performance.



HIPORA

Breathable fabric made of a three-layer microporous coating structure. First layer incorporates microscopic pores, preventing water penetration and coating peeling. Second layer consists of a honeycomb-like structure. This porous layer achieves moisture permeability and resistance to water penetration. Third layer has a very thin yet densely packed structure that increases water resistance. Three complex layers that add up to optimal comfort.

SKI-DRI™

Ski-Dri™ glove inserts are used for maximum breathability. They feature Porelle microporous membrane technology on the palm and an EVA (ethyl vinyl acetate) film on the outer shell. Designed to provide high performance, durable waterproofness and breathability for active applications.

WE KEEP YOU WARM

DWR

DWR stands for Durable Water Repellency. This treatment helps prevent the outer fabric surface from absorbing water, keeping the outerwear both light and comfortable. BRP is using the most performant DWR on the market: Teflon.

TEFLON HT

Teflon provides an invisible barrier around fabric fibers to repel water and stains. In addition to retaining its water shedding properties longer than standard DWR, Teflon HT is also even more resistant to soiling and staining without altering the fabric's color, appearance, structure, texture and breathability. Good up to 20 washes compared to manufactured coatings washable only 1 to 5 times.



CRESTA BY PRIMALOFT

PrimaLoft Cresta offers warmth without weight and extra bulk. It is designed to keep you warm and comfortable throughout the day.

ACTIVE + COLD



PRIMALOFT SPORT

Ultra-fine fibers make PrimaLoft Sport thermally efficient and lightweight. It is engineered to provide the perfect combination of high loft, breathability and water resistance. Soft and durable, PrimaLoft Sport will keep you warm and comfortable all day long in any weather condition.

ACTIVE - VERY COLD



PRIMALOFT ECO

All the performance you expect from PrimaLoft insulation and made from 50% recycled fibers. PrimaLoft Eco delivers lightweight warmth, breathability and water resistance for total comfort during long rides.

ACTIVE - VERY COLD



THERMOLITE

Thermolite Plus provides mid-loft lightweight insulation even in wet conditions. Easy maintenance, hypoallergenic fabric is machine washable/dryable.

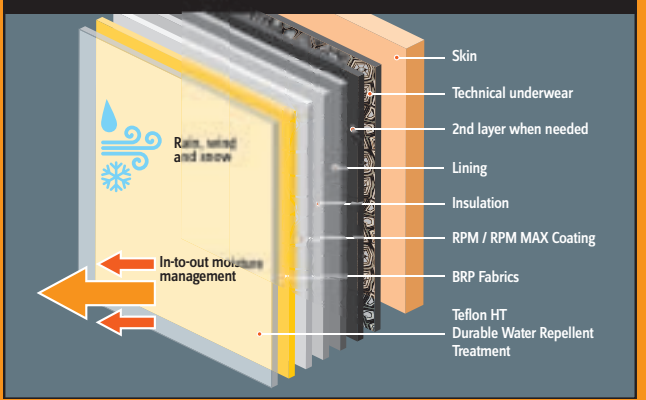
ACTIVE + COLD

THERMAL LOFT

High-loft performance insulation that bundles extreme warmth in an excellent quality-price value package. Machine washable for hassle-free maintenance.

ACTIVE - COLD

WEAR THE RIGHT MIX OF LAYERS FOR A FUN, COMFORTABLE RIDE ANYWHERE. All BRP fabrics stop outside water from penetrating in and wick inner moisture out.

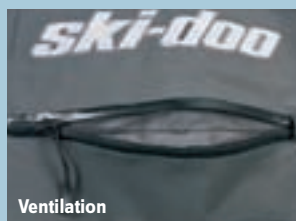
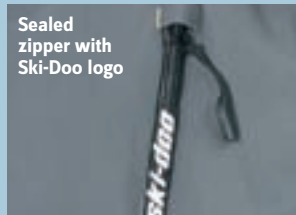


WE KEEP YOU RIDING LONGER



COMPOSITE INSULATION

A technical blend of high performance materials sewn in segments to provide the cozy warmth of a quilt. Widely-spaced stitching holds the insulation in place, protecting the integrity of the insulation and trapping the air in just the right spot to keep you warm. This design maximizes insulation performance by providing not only the correct insulation weight at key points but also by distributing warmth to the places that need it most.



Ventilation



Soft touch edge collar

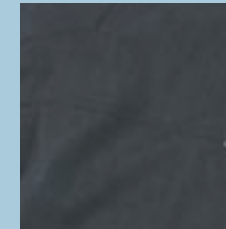
Headphones

MP3 pocket

Strong YKK zipper



The RECCO System is used by 600 rescue organizations worldwide. The small, lightweight reflector is permanently integrated into the rider's Riding Gear. Provides a simple way to equip winter enthusiasts with a basic rescue system to complement conventional companion rescue essentials such as transceivers, probes and shovels. This system is the perfect complement for F1 Focus Avalanche Transceiver users.



TEXTURED POLYESTER TWILL

Same great performance with new rich feel and texture.

BACK TREKKER SERIES

A new category for BRP, introducing Riding Gear specifically designed and made for mountain sledders and active riders. Because total preparedness enhances the total fun experience when riding in the back country or mountain country, our Back Trekker Series readies you for all weather conditions for boldly exploring the trails less traveled or scaling new heights in snowmobiling!